

**Building the Future  
with Precision.**



 [www.gulfapexksa.com](http://www.gulfapexksa.com)  [info@gulfapexksa.com](mailto:info@gulfapexksa.com)



رؤية  
VISION  
**2030**  
المملكة العربية السعودية  
KINGDOM OF SAUDI ARABIA

## WHO WE ARE

Gulf Apex Contracting Co. is a trusted name in contracting, delivering integrated solutions across equipment rental, manpower supply, civil construction, and industrial services.

We combine industry expertise with a commitment to quality, safety, and timely delivery. Our proven track record with leading companies reflects our dedication to professionalism, reliability, and exceeding client expectations.



# OUR SERVICES

- » EQUIPMENT, MANPOWER & TRANSPORTATION
- » ASPHALT WORKS, ROAD MARKING & ROAD SIGNAGE
- » CIVIL STRUCTURAL & INFRA STRUCTURAL WORKS
- » FENCE WORKS & PARKING SHADES
- » EVAPORATION PONDS , HDPE LINERS & RIP RAP WORKS
- » STEEL STRUCTURES AND WAREHOUSE
- » EARTH WORK MATERIAL SUPPLY & SCRAP PURCHASES.





# EQUIPMENT, MANPOWER & TRANSPORTATION

Gulf Apex is the fast growing manpower placement company in the field of providing high quality recruitment services to fulfil the needs of the business community with industry knowledge and expertise. We have dedicated and committed team of Professional Recruitment consultants who understand your recruiting needs and the company culture. Gulf Apex is committed to helping organisations to increase their productivity through better use of their human resources and to enable companies to achieve real competitive advantages. We recruit and retain the highest calibre of experienced employees with proven ability of providing customer service excellence at all times. Gulf Values specialises in the effective manpower supply of temporary and permanent staff. We are confident that we can provide the skills, methodology and experience necessary to meet requirements

## Our Categories

### Equipment

- » Wheel Loader
- » Excavator
- » Roller Compactor
- » Grader
- » Bull Dozer
- » Boom Truck & Cranes

### Manpower

- » WPR
- » HSE Officer
- » Skilled Labors
- » Scaffolders
- » Fabricators
- » Helpers

### Transportation

- » Bus
- » Mini Bus
- » Pickup
- » Dump Truck
- » Flatbed Trailer
- » Lowbed Trailer





## ASPHALT WORKS, ROAD MARKING & ROAD SIGNAGE

Gulf Apex is steadily advancing, having completed road construction projects for reputable and repeat customers around the kingdom. From Access road construction to a temporary site facility to a parking lot at a mall to parking lots of industrial area, we are equipped to manage any size paving project. Unlike other finishing methods, we apply a thick, even layer of asphalt paving to your new road or parking lot. We are capable for construct high-quality roads, streets, and highways; supply asphalt to construction and developments; we offer grading and milling services; we construct sidewalks, curbs, and gutters; and we offer skilled repair and maintenance services to developers, the private sector, and local, regional, and state government agencies. Most of the clients acknowledge us as a preferred Asphalt contractor.

We do all types of Road Markings with Thermoplastic paint using standard machines approved by Aramco & RC standard.

- » Specialized in Asphalt Works (Conventional & Sulfur Extended)
- » Removal & Application of Thermoplastic paints.
- » Installation of CAT eye & Reflectors.
- » Installation of Speed breakers
- » Installation of Sign boards & Bollards.

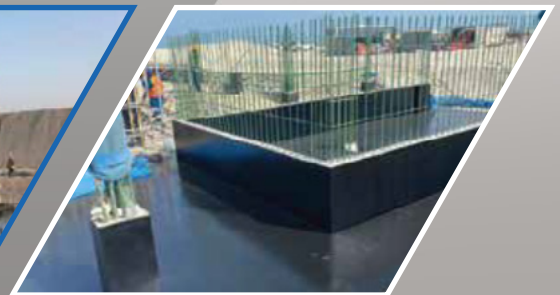




## CIVIL STRUCTURAL & INFRA STRUCTURAL WORKS

We provide comprehensive civil, structural, and infrastructure solutions tailored to industrial, commercial, and residential projects. Our expertise covers all phases of construction, from site development to structural installations, ensuring quality, durability, and compliance with industry standards.

We have a well arranged and disciplined yard for all types of precast yard located in the outer skirt of the city nearest to a approved concrete plan in jubail saudi arabia. We have executed major concrete works such as foundations for pipe rack allingment , foundations for pipe laying, concrete walls for housing project, concrete manholes for various projects, concrete barriers, guard rail foundations etc... We are also experienced in on site concrete works such as different typed of ditches, drainage systems, building foundation works, fence foundations, concrete slab works, concrete blindings, encasements , duct banks, box culverts , pipe culverts,concrete watwr tanks etc.





## FENCE WORKS & PARKING SHADES

Gulf Apex have more experience is Supply & Installation of any kind of Security Fencing system and Guard rails with approved Aramco & RC standards. We do all types of Car parking sheds with the wheel stoppers and Markings as standards specified in the Kingdom. In the modern instrumental and commercial the strength and beauty of structures lies in its fabrication. We expertise this task by finishing ultra-modern designs using reinforced metal and executing the structure in a moderate, economic and timely means. We have in house an enormous variety of fabric structure in unique style patterns, designs, sizes and color combinations which gives the customers a huge variety of range to choose from.





## EVAPORATION PONDS, HDPE LINERS & RIP RAP WORKS

Gulf Apex has a dedicated division for liner works with an experienced team specialized in HDPE liners, Geomembrane systems, Geosynthetic Drain Materials, and Geosynthetic Clay Liners (GCL). We use standard fusion welding machines for HDPE liner installations and advanced testing equipment approved by Aramco and Royal Commission (RC) standards to ensure high-quality execution. Our services also include Evaporation Ponds, HDPE Liners, and Rip Rap Works for industrial and infrastructure projects.



# STEEL STRUCTURES AND WAREHOUSE

Gulf Apex provides complete solutions for Steel Structures and Warehouse construction, delivering durable, cost-effective, and high-quality industrial and commercial facilities. Our expertise includes the design, fabrication, and erection of steel structures, warehouses, sheds, and storage facilities tailored to client requirements and industry standards. With skilled manpower, modern equipment, and a strong commitment to safety and quality, we ensure reliable execution for projects of all sizes while meeting Aramco and Royal Commission (RC) standards.





## **EARTH WORK MATERIAL SUPPLY & SCRAP PURCHASES.**

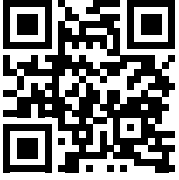
Gulf Apex specializes in Earth Work Material Supply and Scrap Purchases, providing reliable solutions for construction, industrial, and infrastructure projects. We supply high-quality earthwork materials including filling sand, backfilling materials, aggregates, and related construction materials to meet project specifications and industry standards. In addition, we are actively engaged in the purchase and handling of industrial and construction scrap materials, ensuring efficient collection, transportation, and responsible disposal or recycling through professional and environmentally compliant practices.





## OUR CLIENTS





## Building the Future with Precision.



**GULF  
APEX**

GULF APEX Contracting Co.

- 🌐 [www.gulfapexksa.com](http://www.gulfapexksa.com)
- ✉ [info@gulfapexksa.com](mailto:info@gulfapexksa.com)
- 📍 Office No. 4, 2<sup>nd</sup> Floor,  
King Saud Street, Al Shamaliya  
Al Khobar – 34429, KSA